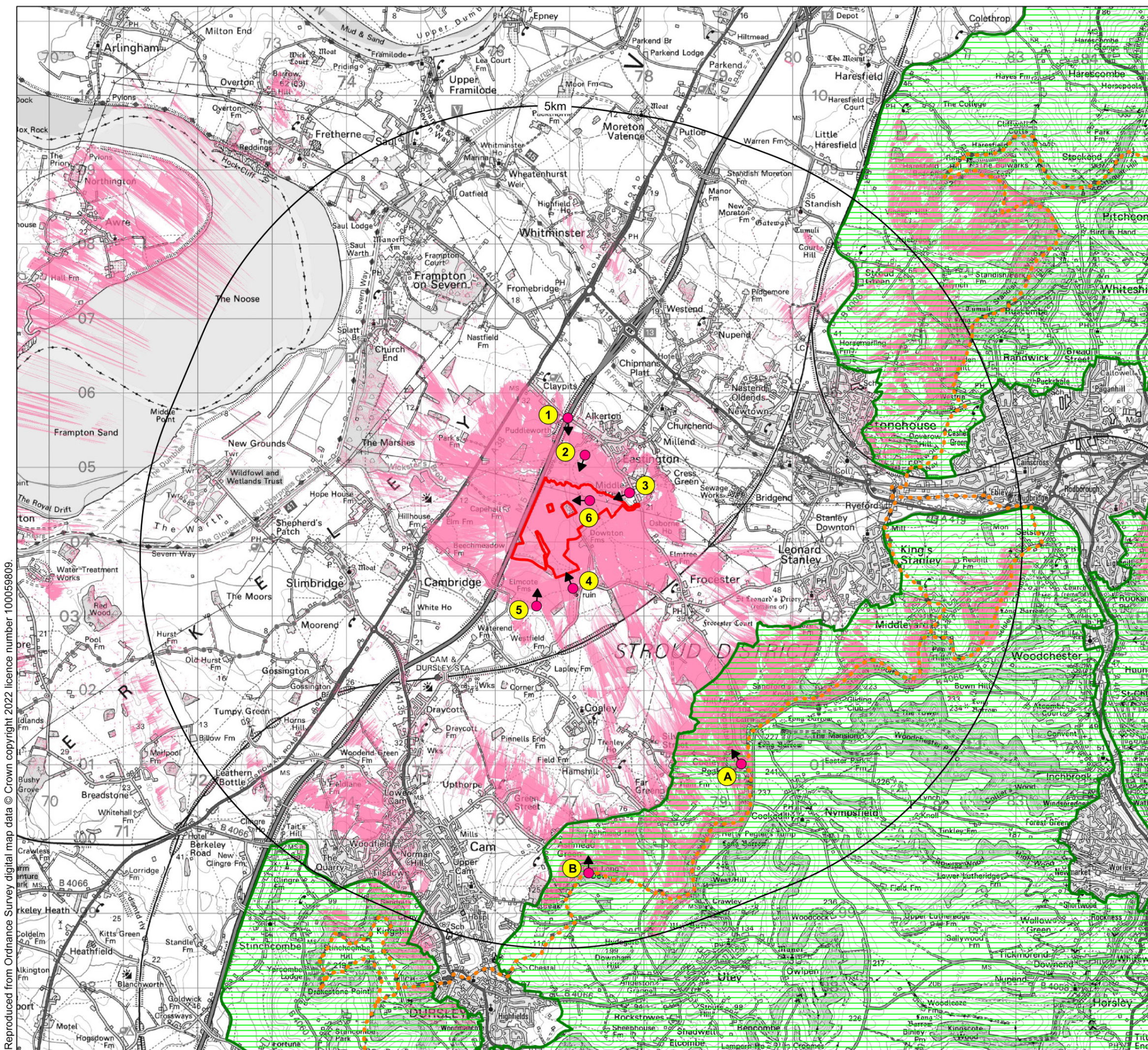


Reproduced from Ordnance Survey digital map data © Crown copyright 2022 licence number 100059809.



Key

- Proposed Development Boundary
- Study Area (5km minimum offset)
- Cotswolds Area of Outstanding Natural Beauty
- Cotswold Way National Trail
- Proposed Viewpoint Locations
 - A) From look out point on Cotswold Way national trail, Coaley Peak, in Cotswolds Area of Outstanding Natural Beauty.
 - B) From Cotswold Way national trail, Cam Long Down, in Cotswolds Area of Outstanding Natural Beauty.

Zone of Theoretical Visibility (ZTV)

- Zone of Theoretical Visibility

Note:

The ZTV illustrates an area of theoretical visibility of any part of the development, calculated to a height of 3.1m with a viewer height of 1.7m above ground level.

The ZTV is based on Lidar Digital Surface Model (DSM) data with 2m accuracy, downloaded from the "DEFRA survey data" located on the official UK government environment data website.

The ZTV represents a 'worse-case' scenario with regard to the visibility of the development. The ZTV however does form an appropriate starting point for undertaking the landscape and visual impact assessment and selection of viewpoints.

The ZTV was calculated using QGIS software on Ordnance Survey (OS) raster tiles of 1:50,000 scale and Lidar Composite DSM 2020 (2m) Raster DSM.

© Amalgam Landscape 2022
This drawing may not be reproduced in whole or in part without written permission from Amalgam Landscape

Scale 1:50,000 @ A3

Drawn : PS	Checked : AJW
Ref : P0615	Revision : 000
Date : 11/10/2022	

Zone of Theoretical Visibility and Proposed Viewpoint Locations
Figure 6

Proposed Solar Development at Frocester

T. 01275 627077
E. info@amalgamlandscape.co.uk
W. www.amalgamlandscape.co.uk